

THE FUTURE OF LIVINGSTON HIGH SCHOOL

Meeting the
Needs of our
Growing
Student Body

LB  **E**
Livingston Board Of Education
November 15, 2005



Planning for the Needs of our Students:

Legacy of the Long Range Planning Committee

□ Phase 1

- Renovations and additions at Burnet Hill, Collins and Riker Hill

□ Phase 2

- December 1999 Referendum: Additions and Renovations to K-8 Schools

□ Formation of FUSE Committee

- To address Livingston High School
-

Past, Current and Projected Enrollment

- ❑ 1990-1991: 1,196
- ❑ 2000-2001: 1,413
- ❑ 2003-2004: 1,538
- ❑ 2004-2005: 1,578
- ❑ 2008-2009: 1,727
- ❑ 2013-2014: 2,000



Student Population Growth

- 32% increase in student population at Livingston High School between 1990-1991 and 2004-2005
 - By the 2008-09 school year, this number is estimated to be 44%
 - By the 2013-14 school year, it is estimated to be 67%
-

Functional Capacity of LHS

- ❑ Definition: total square feet – 213,351–
divided by 151 square feet per student
- ❑ Functional capacity of LHS is 1,413
students



Room Utilization at LHS

- ❑ State guidelines recommend 83% room utilization
- ❑ Livingston High School is at 98%



Highlights of the Plan

- ❑ Increased academic opportunities for students
 - ❑ Approximately 308,000 square feet
 - ❑ State of the art science and robotics facilities
 - ❑ 16,000 square foot gymnasium with outdoor accessible rest rooms, snack bar, team rooms, seating for entire LHS community
 - ❑ Increase in parking on site; work with township & neighbors for additional parking offsite
 - ❑ Actual construction is estimated to take 18 months beginning June 2007 with completion by January 2009.
 - ❑ Estimated cost: \$51,521,069 million
-

What the Plan Looks Like



Costs/Tax Impact of Referendum

- ❑ Tax impact begins as debt service payments are due (when funds are borrowed), not as soon as referendum passes
 - ❑ Interest rate is not official until bonds are sold
 - ❑ Interest rate assumed for our calculations:
 - 20 years: 4.750%
 - 25 years: 4.875%
 - 30 years: 5.000%
 - 35 years: 5.100%
-

Costs/Tax Impact of Referendum (cont'd.)

- ❑ Assume ratables will increase by 1% per year (based on historical information)
 - ❑ Re-assessment: Projected tax impact based on current assessments. If they change, calculations could differ.
 - ❑ Interest earnings on bond proceeds that can offset debt service and reduce tax impact not included in these projections
 - ❑ Eligible for \$10,295,683 state grant money
-

Projected AVERAGE annual tax impact over life of bond utilizing these factors on a house currently assessed at \$75,000

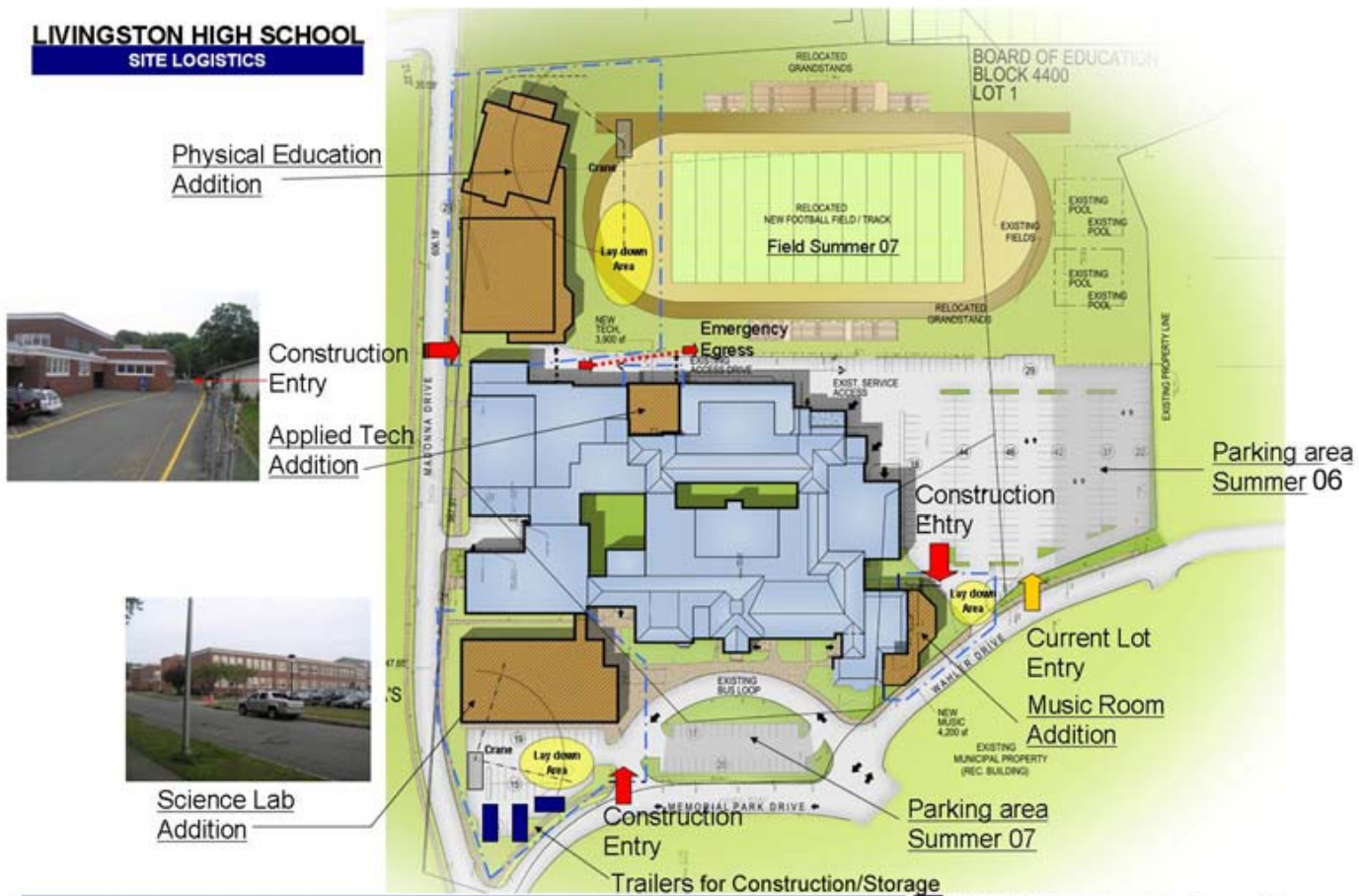
	Without Grant Money	With Grant Money
20 year	\$290	\$232
25 year	\$252	\$202
30 year	\$228	\$183
35 year	\$212	\$170

Tentative Timeline

- ❑ December 13, 2005: Referendum
 - ❑ June-July 2006: Expand North parking lot
 - ❑ Dec. 2005 – Dec. 2006: Design phase
 - ❑ January 2007-April 2007: Bid, State approvals
 - ❑ By June 2007: Construction begins
 - ❑ By August 2007: Field and bleachers relocated
 - ❑ By September 2008: Gym/science wings operational
 - ❑ By January 2009: Construction completed, including interior renovations
-

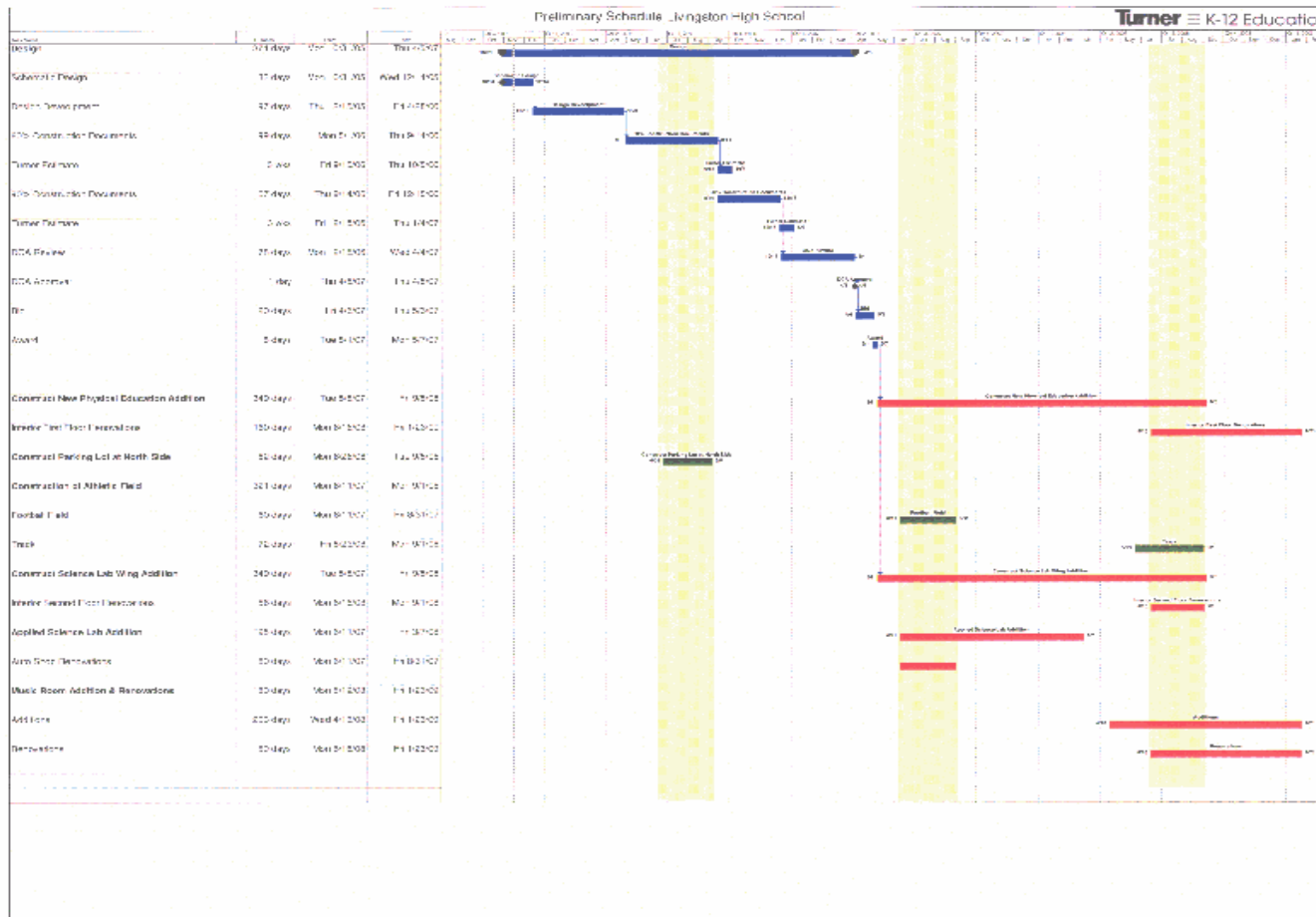
Logistics Plan

LIVINGSTON HIGH SCHOOL SITE LOGISTICS



Construction Schedule

Will be posted at LHS and Board Office



The Future of Livingston High School is in your hands

The image shows a detailed site plan for Livingston High School. The plan includes various buildings and areas, with a legend indicating that brown outlines represent 'NEW BUILDING' and blue outlines represent 'EXISTING BUILDING'. Key features include a 'SELECTED GRANITEWALK', 'BOARD OF EDUCATION BLOCK 4400 LOT 1', 'SELECTED NEW FOOTBALL FIELD/TRACK', 'EXISTING POOL', 'EXISTING SOCCER', 'EXISTING VOTING AREA', 'EXISTING VOTING AREA', 'ST. PHILOMENA'S BLOCK 4400 LOT 30 22.49 AC.', 'NEW MUSIC BLDG', and 'EXISTING MUNICIPAL PROPERTY (REC. BUILDING)'. A road labeled 'MEMORIAL PARK DRIVE' is also shown. The word 'VOTE!' is superimposed in large, bold, green letters across the center of the plan. In the top left corner, the logo for 'LB E Livingston Board Of Education' is present. In the bottom right corner, the logo for 'DRG ARCHITECTS, AIA' is visible.

THE FUTURE OF LIVINGSTON HIGH SCHOOL
Meeting our Student's Educational Needs

DRG
ARCHITECTS, AIA

Tuesday,
December
13

Polls open
1:00 pm –
9:00 pm