

Livingston High School Design Update





Schedule

- ◆ 12 Months Design
- ◆ May 2006 35%
- ◆ Sept 2006 60%
- ◆ Dec 2006 100% to DCA
- ◆ Open bids Spring 2007



Process

- ◆ 35% Programming
- ◆ 60% Design Development
Submit to Department of Education
- ◆ 100% Complete Construction Documents
Submit to Department of
Community Affairs



35% Programming

- ◆ **Contracts**
- ◆ **General Items Addressed**
- ◆ **Civil Engineer Engaged**
- ◆ **Architectural**
- ◆ **Structural**
- ◆ **MEP**



Project

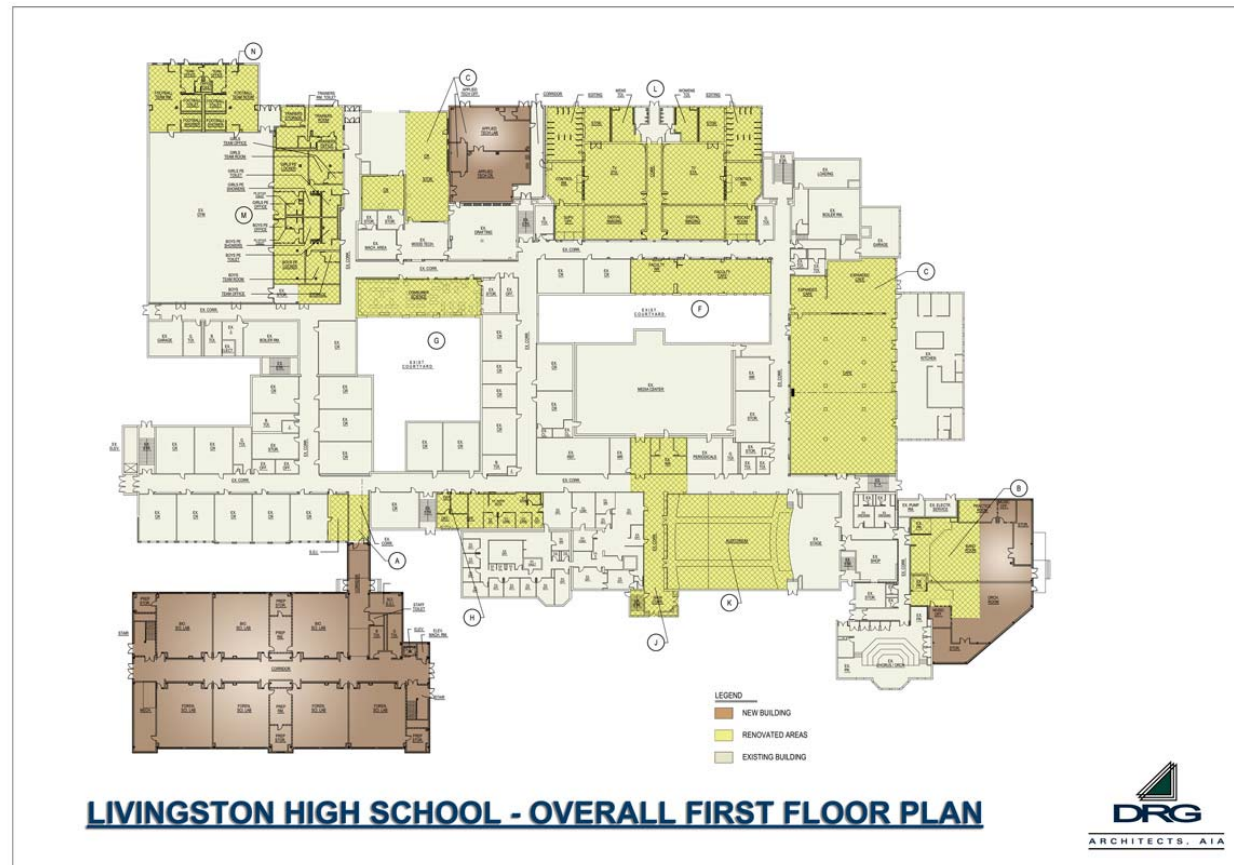


- ◆ Programming driven by Educational Specifications
- ◆ Area Layouts Reviewed by Supervisors / Superintendent
- ◆ Basic Scope Documented (MEP Requirements)
- ◆ MEP Approach Confirmed with Buildings and grounds

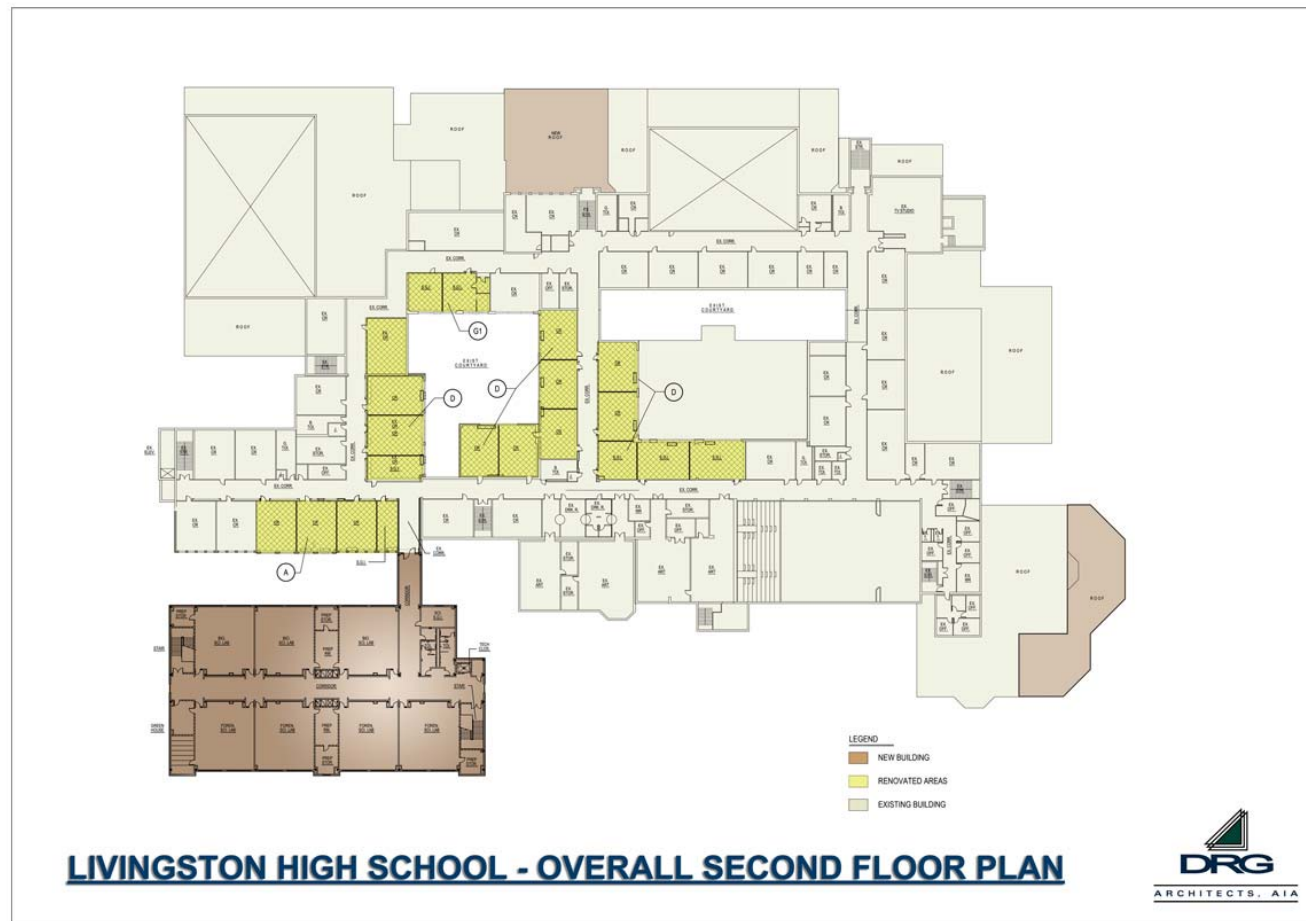


Site Plan

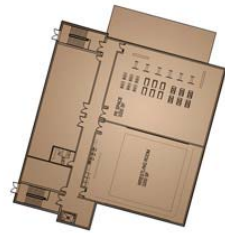
First Floor Plan



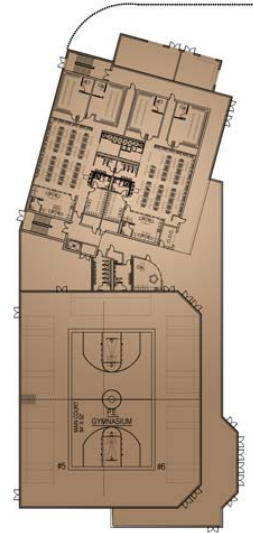
Second Floor Plan



Physical Education Building



**OVERALL UPPER FLOOR PLAN
(COMPETITION GYM.)**



**OVERALL FIRST FLOOR PLAN
(COMPETITION GYM.)**

LEGEND
■ NEW BUILDING

**LIVINGSTON HIGH SCHOOL - OVERALL FLOOR PLANS
(COMPETITION GYMNASIUM)**





Considerations



- ◆ LEED
- ◆ Additional Air Conditioning of the High School
- ◆ Operating Costs for Additional AC
- ◆ AC Split System Life Cycle Costing
- ◆ *Other*

Aesthetics



FRONT ENTRANCE - LIVINGSTON HIGH SCHOOL



SCIENCE WING - LIVINGSTON HIGH SCHOOL





FRONT ELEVATION



SCIENCE WING - LIVINGSTON HIGH SCHOOL

