



Livingston
PUBLIC SCHOOLS

Taking Stock: **Assessment Update 2015**

A year of academic achievement and accomplishment

Livingston Board of Education
November 9, 2015



NJASK – Science



Advanced Placement Test



Scholastic Aptitude Test



The ACT



“The very **best performers** do not move on before they have **scrutinized** and **understood** the factors underpinning their **success.**”

Jones, G. (2008, June). How the Best of the Best Get Better and Better, *Harvard Business Review*.



NJASK Gr. 4 Science 2015 District vs. DFG I vs. State

| Science – Grade 4 | | | | | | | | | |
|----------------------------|----------------------|-------|-------|--------------|-------|-------|---------------------|-------|-------|
| | Partially Proficient | | | Proficient | | | Advanced Proficient | | |
| | District | DFG I | State | District | DFG I | State | District | DFG I | State |
| Total Students | 1.8% | 2.6% | 9.4% | 23.0% | 30.0% | 43.4% | 75.2% | 67.4% | 47.2% |
| General Education Students | 0.5% | 0.9% | 5.6% | 18.1% | 26.4% | 41.9% | 81.4% | 72.7% | 52.5% |
| Special Education Students | 7.8% | 9.9% | 21.8% | 45.5% | 45.6% | 49.6% | 46.8% | 44.5% | 28.6% |



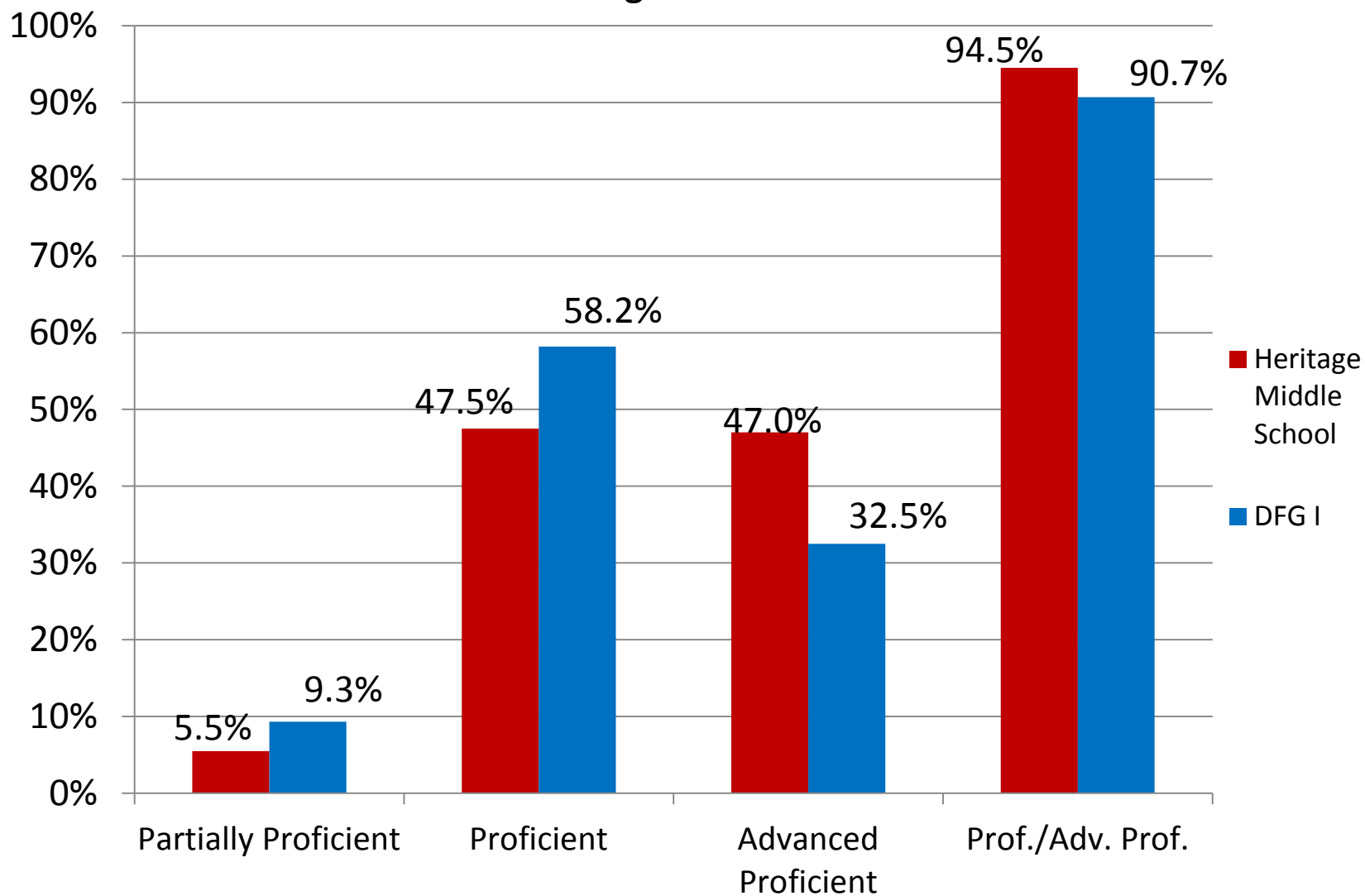
NJASK Gr. 8 Science 2015 District vs. DFG I vs. State

| Science – Grade 8 | | | | | | | | | |
|----------------------------|----------------------|-------|-------|--------------|-------|-------|---------------------|-------|-------|
| | Partially Proficient | | | Proficient | | | Advanced Proficient | | |
| | District | DFG I | State | District | DFG I | State | District | DFG I | State |
| Total Students | 5.5% | 9.3% | 23.0% | 47.5% | 58.2% | 57.7% | 47.0% | 32.5% | 19.3% |
| General Education Students | 2.6% | 4.8% | 15.7% | 45.9% | 58.6% | 61.6% | 51.5% | 36.6% | 22.7% |
| Special Education Students | 30.4% | 35.6% | 54.2% | 58.7% | 55.8% | 41.3% | 10.9% | 8.6% | 4.5% |



NJASK 2015 Gr. 8 Science

Heritage Middle School vs. DFG I





LHS School Score Summary for 2015

- 584 students were enrolled in 1 or more AP courses
- **98% of enrolled AP students** took at least 1 AP exam (571 out of 585 AP students)
- AP students took **90%** of the exams for which they were eligible (1,340 exams out of a possible 1,487)
- The number of AP test takers increased by **12.6%** since 2014
- The number of exams that were taken has increased by **13.8%** since 2014
- **90%** of the students scored 3 or higher in 2015



LHS School Score Summary for 2015

- As the number of students enrolled in AP has steadily increased, LHS students have stayed within the 90% range of students earning a **score of 3 or higher**:
 - **2009 – 92.8%**
 - **2010 – 94.5%**
 - **2011 – 96.1%**
 - **2012 – 95.5%**
 - **2013 – 96.6%**
 - **2014 – 93.9%**
 - **2015 – 90.0%**
- 1,163 of the 1,340 exams taken resulted in a score of **3 or higher**
- 875 of the 1,340 exams taken resulted in a score of **4 or higher**



LHS School Score Summary for 2015

Comparison to the Last Year of Restricted Enrollment

| | 2010 | 2011 | 2012 | 2013 | 2014 | 2015 | 1 yr. % change | 6 yr. % change |
|------------------------------|-------|-------|-------|-------|-------|-------|----------------|----------------|
| Total AP Students | 348 | 410 | 470 | 502 | 507 | 571 | +12.6% | +64.1% |
| Number of Exams | 768 | 844 | 992 | 1,072 | 1,178 | 1,340 | +13.8% | +74.5% |
| AP Students with scores 3+ | 329 | 394 | 449 | 485 | 476 | 514 | +8% | +56.2% |
| % AP Students with Scores 3+ | 94.5% | 96.1% | 95.5% | 96.6% | 93.9% | 90% | -3.9% | -4.5% |
| NJ % AP Students with 3+ | 73.9% | 74.6% | 75.1% | 74.6% | 74.2% | 72.8% | -1.4% | -1.1% |
| Global % AP Students with 3+ | 60.2% | 60.2% | 61.5% | 60.9% | 61.3% | 60.6% | -.7% | +4% |



AP 2011 – 2015 Five Year Score Summary LHS vs. NJ vs. Global

2011 2012 2013 2014 2015

Livingston High School

| | | | | | |
|---------------------------------------|------|------|-------|-------|-------|
| Total AP Students | 410 | 470 | 502 | 507 | 571 |
| Number of Exams | 844 | 992 | 1,072 | 1,180 | 1,340 |
| AP Students with Scores 3+ | 394 | 449 | 485 | 476 | 514 |
| % of Total AP Students with Scores 3+ | 96.1 | 95.5 | 96.6 | 93.9 | 90.0 |

New Jersey

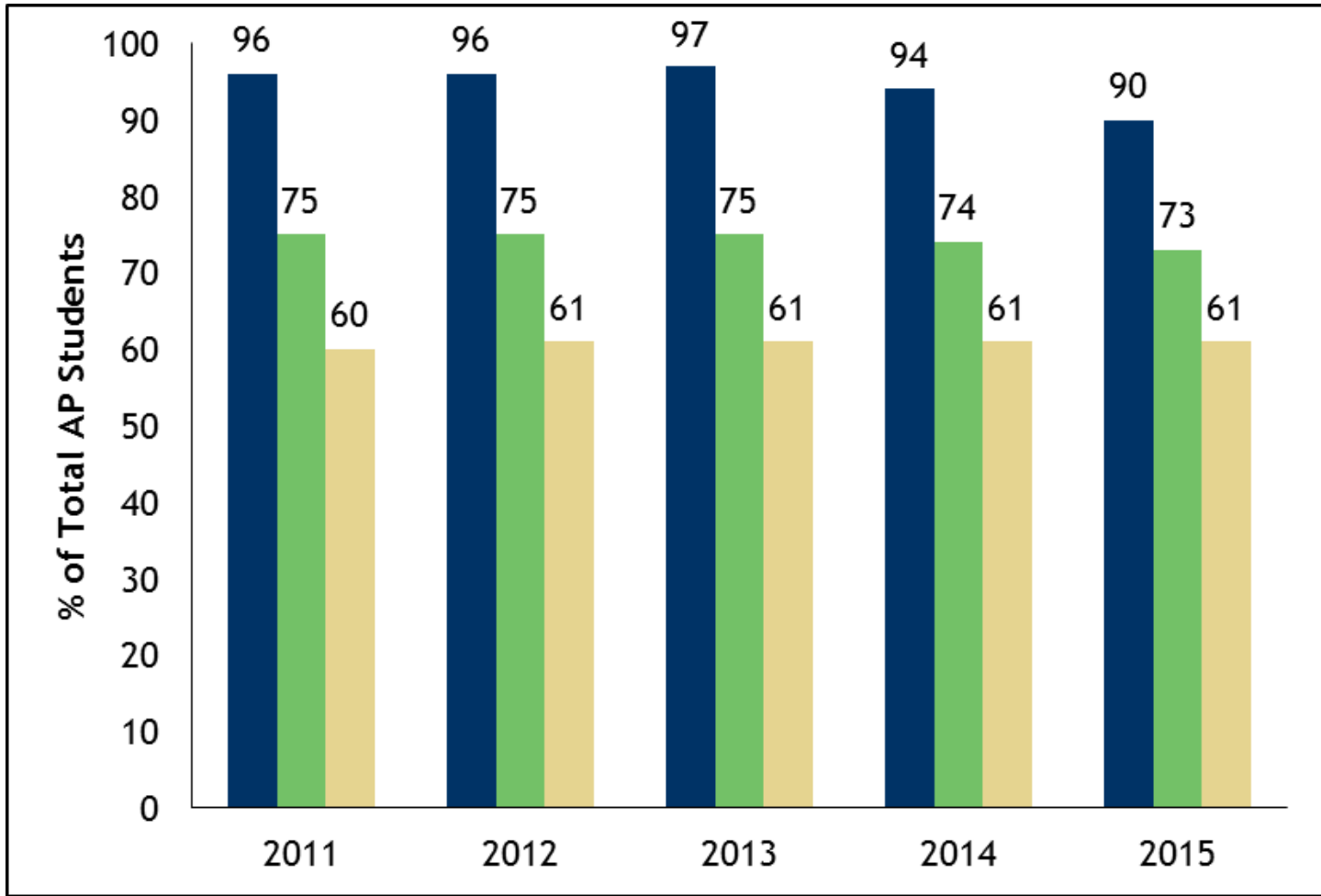
| | | | | | |
|---------------------------------------|--------|---------|---------|---------|---------|
| Total AP Students | 51,599 | 55,351 | 59,316 | 62,730 | 66,998 |
| Number of Exams | 95,876 | 103,942 | 112,130 | 119,625 | 130,401 |
| AP Students with Scores 3+ | 38,501 | 41,565 | 44,240 | 46,528 | 48,799 |
| % of Total AP Students with Scores 3+ | 74.6 | 75.1 | 74.6 | 74.2 | 72.8 |

Global

| | | | | | |
|---------------------------------------|-----------|-----------|-----------|-----------|-----------|
| Total AP Students | 1,982,133 | 2,106,843 | 2,225,625 | 2,352,026 | 2,486,200 |
| Number of Exams | 3,475,395 | 3,714,079 | 3,955,410 | 4,199,454 | 4,498,909 |
| AP Students with Scores 3+ | 1,193,662 | 1,295,051 | 1,354,800 | 1,442,136 | 1,509,790 |
| % of Total AP Students with Scores 3+ | 60.2 | 61.5 | 60.9 | 61.3 | 60.7 |



AP 2015 Percentage of Students with Scores 3+



Livingston High School (310705) New Jersey Global



LHS Scoring Breakdown for 2015

Total Number of AP Students: 571

| | 5 | 4 | 3 | 2 | 1 | Total Exams |
|---------------------------|----------|----------|----------|----------|----------|--------------------|
| Number of Exams | 445 | 430 | 288 | 136 | 41 | 1340 |
| Percentage of Total Exams | 33 | 32 | 21 | 10 | 3 | |
| Number of AP Students | 249 | 297 | 222 | 111 | 37 | |



LHS AP Scholars 2015

Total Scholars: 239
Average Score: 4.29

| | AP Scholar | AP Scholar With Honor | AP Scholar With Distinction | National AP Scholar |
|--------------------|------------|-----------------------|-----------------------------|---------------------|
| Number of Scholars | 66 | 46 | 127 | 37 |
| Average Score | 3.61 | 3.85 | 4.43 | 4.65 |

Note:

AP Scholar – Students receive scores of 3 or higher on 3 or more AP Exams

AP Scholar With Honor – Students receive average score of at least 3.25 on all AP Exams taken, and scores of 3 or higher on 4 or more of these exams

AP Scholar With Distinction – Students receive average score of at least 3.5 on all AP Exams taken, and scores of 3 or higher on 5 or more of these exams.

National AP Scholar – Students receive average score of at least 4.0 on all AP Exams taken, and scores of 4 or higher on 8 or more of these exams.



LHS Equity and Excellence 2015

| Group | Percentage |
|--------------------------|------------|
| Graduating Class Summary | 59.9% |
| 12 th Grade | 47.7% |
| 11 th Grade | 45.3% |
| 10 th Grade | 12.0% |

Demonstrates the proportion of LHS's senior class who scored a 3 or higher on an AP Exam at any point during high school.

Also demonstrates what percentage of LHS's entire tenth, eleventh, and twelfth grade classes took and scored a 3 or higher on at least one AP Exam in May 2015.



Current SAT – Will be administered until January 2016

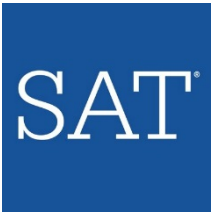
- Critical Reading
- Mathematics
- Writing
- 200 – 800 point scale for each section, possible total of 2400
- Fractions of a point removed for wrong answers, no penalty for skipped questions

New SAT – Will first be administered March 2016

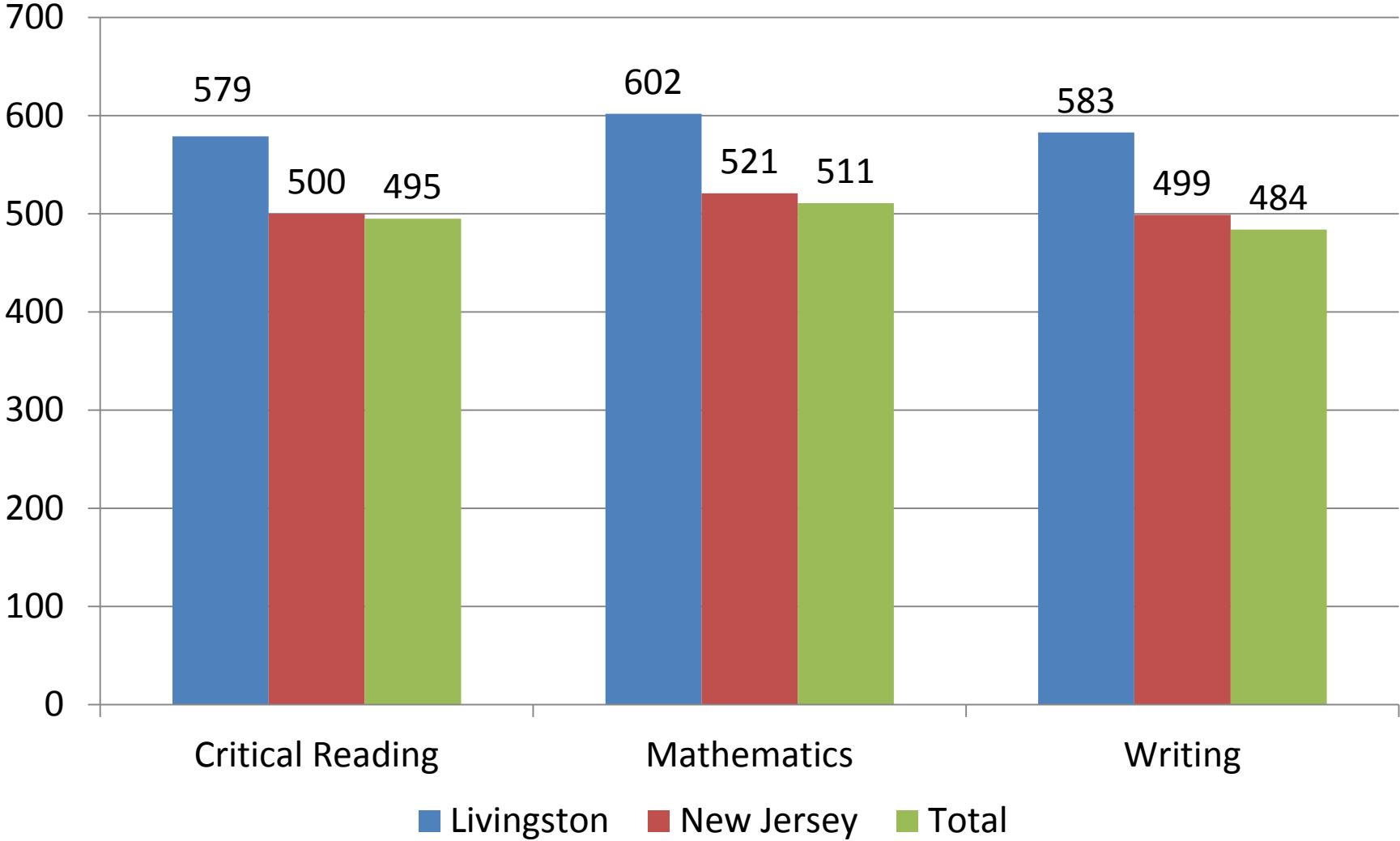
- Reading, Writing and Language, Math and optional Essay
- 400 – 1600 score scale
- No penalty for guessing
- No more “SAT Words”

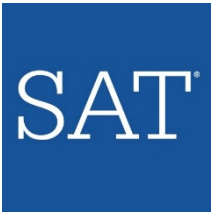
“Skills aren’t bought, they’re learned”

College Board’s Partnership with Khan Academy offers students free, personalized practice



SAT 2015
Overall Mean Scores
Livingston vs. New Jersey vs. Total

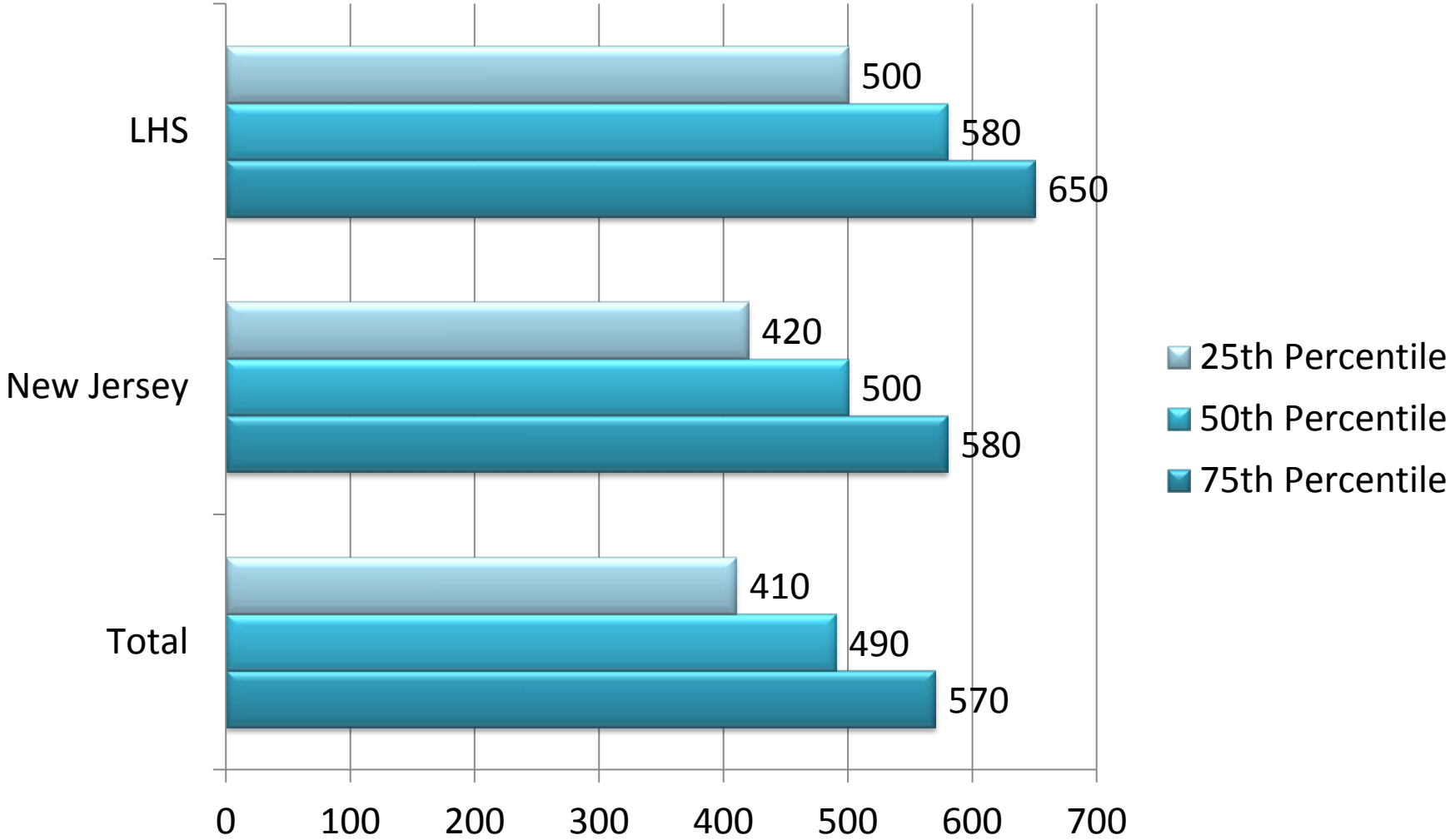




SAT 2015

Critical Reading Percentiles

LHS vs. New Jersey vs. Total

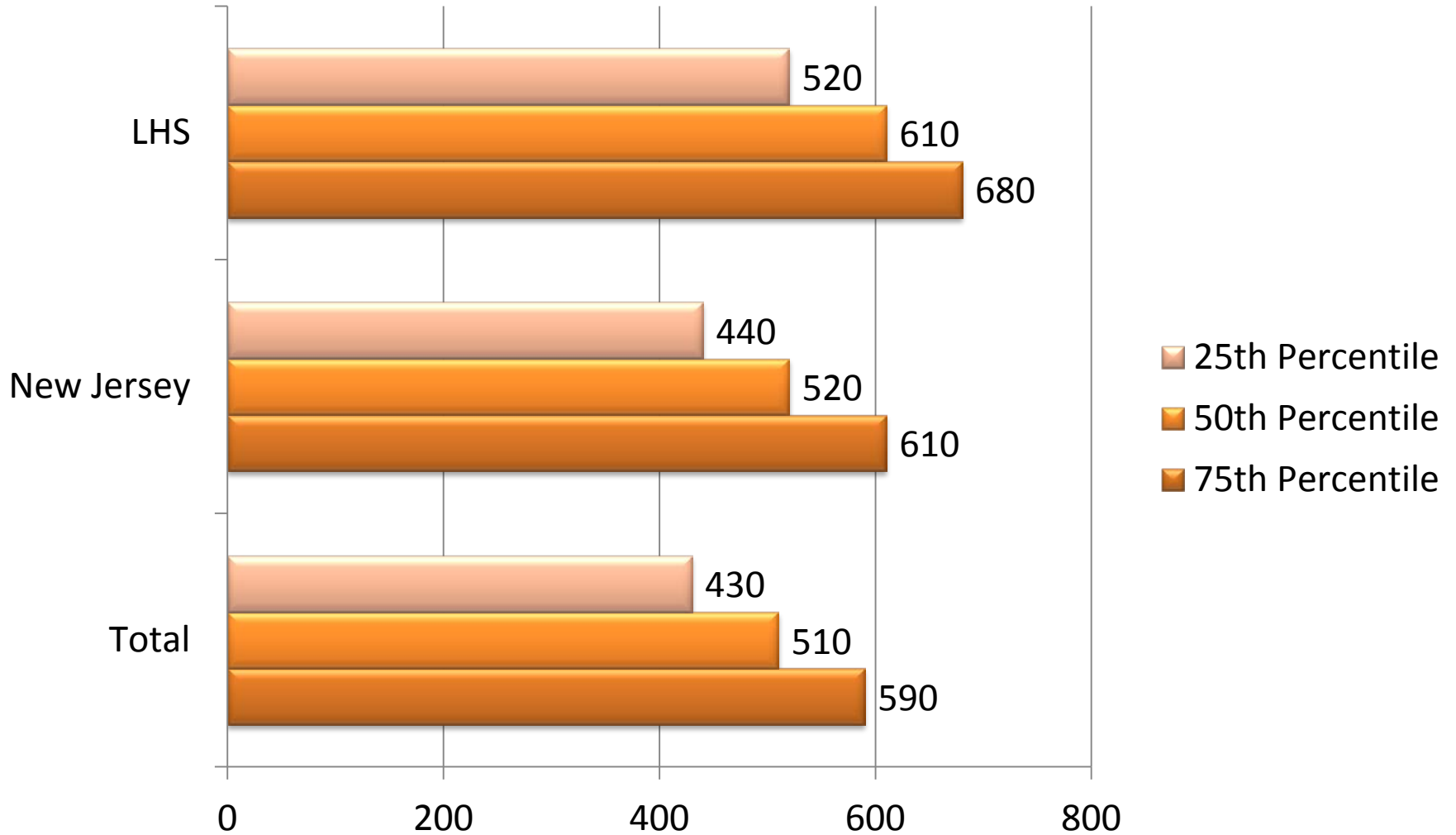


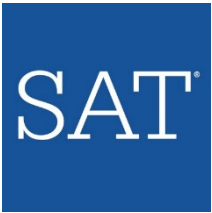


SAT 2015

Mathematics Percentiles

LHS vs. New Jersey vs. Total

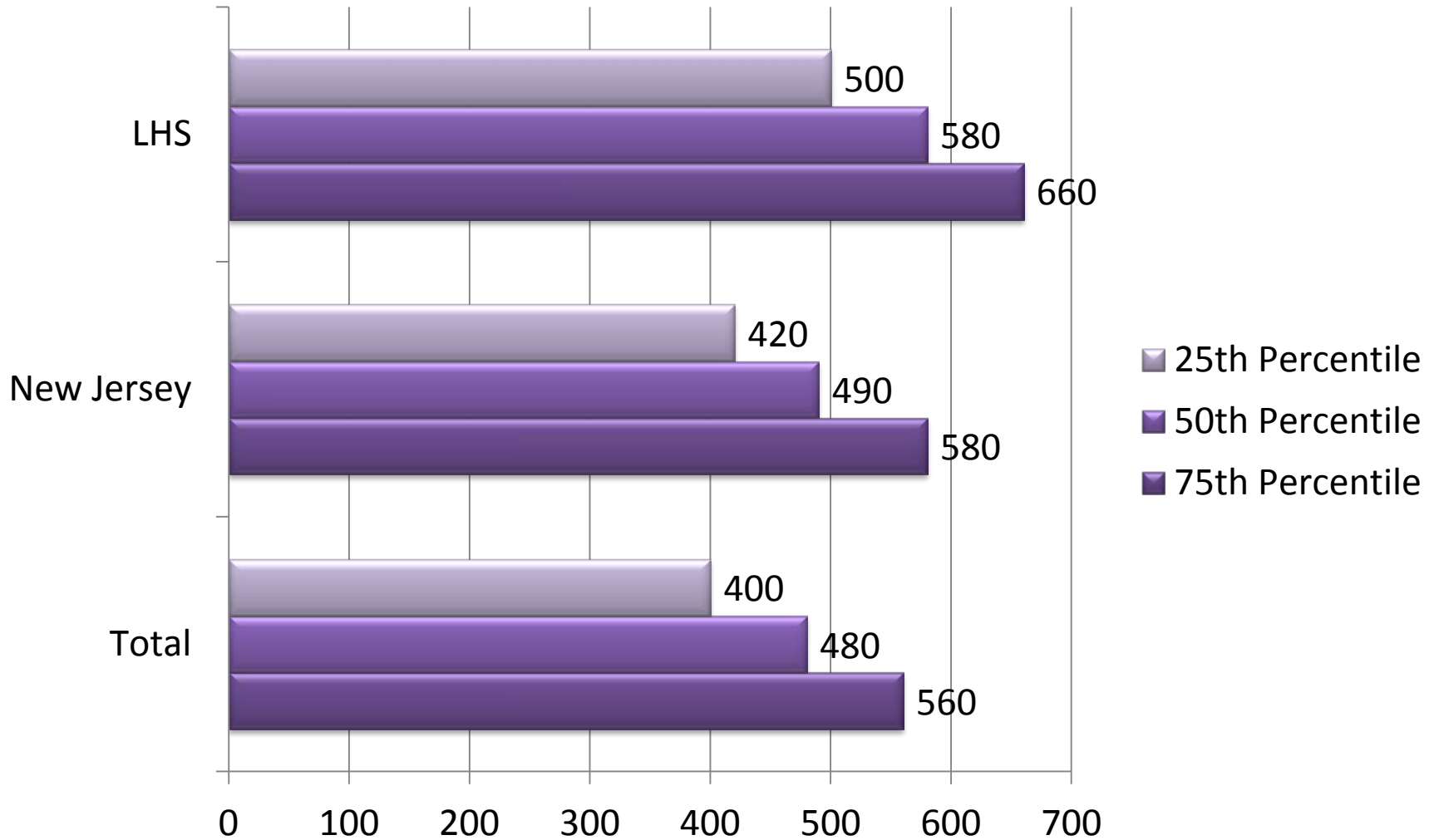




SAT 2015

Writing Percentiles

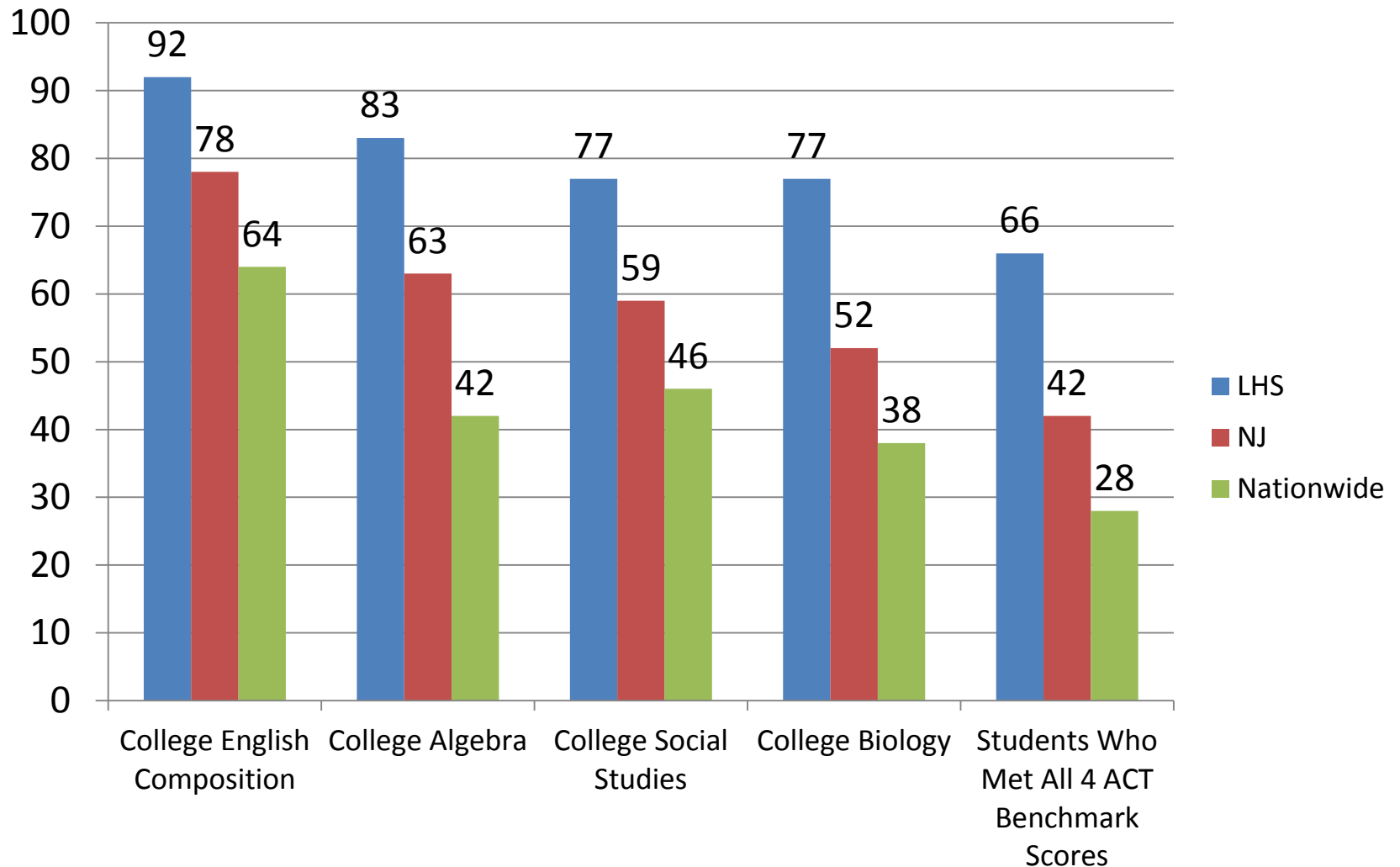
LHS vs. New Jersey vs. Total





The ACT 2015

Percent of Students Meeting College Readiness Benchmarks





The ACT 2015 Average Scores

| | LHS | NJ |
|-------------|------|------|
| English | 26.5 | 22.9 |
| Mathematics | 26.8 | 23.7 |
| Reading | 26.4 | 23.3 |
| Science | 26.0 | 22.6 |
| Composite | 26.6 | 23.2 |